

Species	Creel Limit	Minimum Length Limit
Channel Catfish	2 Per Day	15"
Crappie	10 Per Day	9"
Sunfish	Unlimited	Unlimited
Walleye	1 Per Day	18"
Wipers	1 Per Day	18"
Smallmouth Bass	Remove	13" and under
	Protected	14"-18"
	1 Per Day	18"
Largemouth Bass	Remove	13" and under
	Protected	14"-18"
	1 Per Day	18"
All Other Species	Unlimited	Unlimited

2018 Completed Projects

- ◆ 2,500 Crappie Stocked
- ◆ 1 New Fishing Dock Installed Park Lake #1
- ◆ Retrofit Dock on 7-acre Lake for ADA

2019 Projects

- ◆ Continue Fish Stocking
- ◆ Place fish habitat in the lakes
- ◆ Continue to Educate Property Owners on Zebra Mussel Prevention

BOATS

Only Property Owners at Linn Valley Lakes are allowed to put their boats onto the lakes/ponds at Linn Valley. The boats must be registered at the POA office. Owners must present proof of ownership, horsepower, and current liability insurance. You will be given a sticker with the current year and the registration, which must be renewed each year.

OTHER BOAT REGULATIONS

Large Lake

- ◆ Motor boats with a 160 hp maximum speed are allowed.

Small Lakes and Ponds

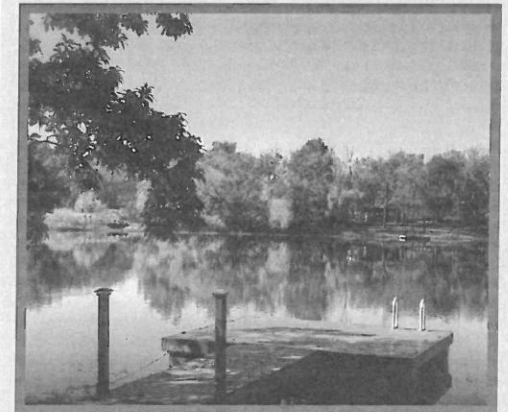
- ◆ Boats that can be hand-carried by two people are allowed with a motor size that one person can carry (e.g. 15hp trolling motor is acceptable.)
- ◆ NO guest boats are allowed on any body of water within Linn Valley Lakes

If you see someone not abiding by the requirements listed above please call the Linn Valley Police Department at 913-757-3911 immediately.

OTHER REGULATIONS

- ◆ Trotlines, Seining or Jug Fishing are **NOT** allowed.
- ◆ Guests of Association members are allowed to use amenities; however, an Association member must accompany them.
- ◆ State fishing licenses are not required at Linn Valley Lakes.

LINN VALLEY LAKES FISHING



2019

The LVL Waters

Main Lake

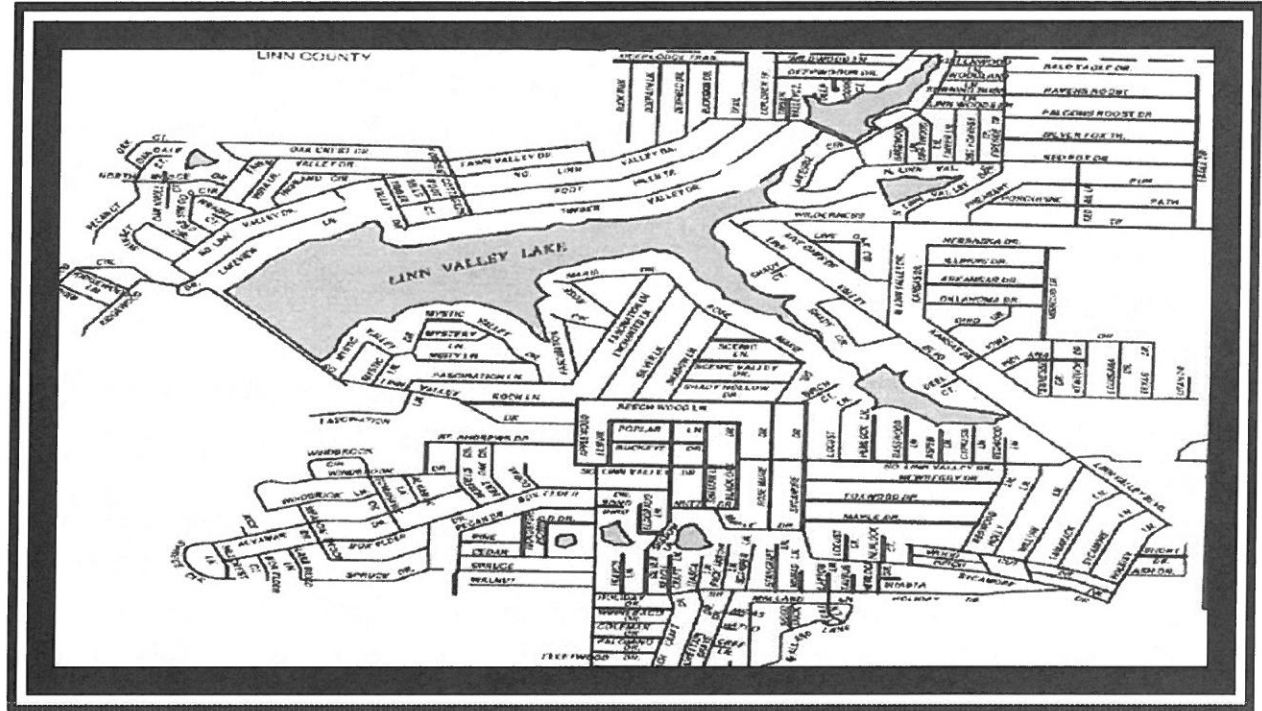
The main lake is 130 acres with several access points, including 4 public docks. The lake's boat launch is located on the NE side of Timber Valley Drive. You can catch bluegill, channel catfish, crappie, largemouth bass, smallmouth bass, walleye, wipers and various carp species.

10 Acre Lake

The 10 acre lake has a public dock on the dam. Access can be gained at the dam. East shore offers easiest fishing. You can catch bluegill, channel catfish, crappie, largemouth bass and wipers.

7 Acre Lake (Paddleboat)

The 7 acre lake has easy access around the lake with 2 docks. The docks are located on the east side by boat launch and west side off Birch Court. You can catch bluegill, channel catfish, crappie, and largemouth bass.



5 Acre Lake (Kiddie Pond)

The 5 acre lake has easy access at the dam on both sides with a fishing dock at the south dam access. You can catch bluegill, channel catfish, crappie, largemouth bass.

Park Lake #1 (Northwest Corner)

Park Lake #1 has access points at both sides of dam. Park Lake #1 is located off Northridge Drive. You can catch bluegill, channel catfish, and largemouth bass.

Park Lake #2 (South Central)

Park Lake #2 has access from west side off Elm Drive. You can catch bluegill, channel catfish, and largemouth bass.

Park Lake #3 (Southeast)

Park Lake #3 has easy access from Beechcraft Lane, Itasca Lane, Pace Arrow Lane and Silver Spur Lane. You can catch bluegill, channel catfish, and largemouth bass.

Park Lake #4 (Southwest)

Park Lake #4 has access from the east off Elm Drive. Park Lake #2 and #4 are across the street from each other, just few yards apart. You can catch bluegill, channel catfish, crappie, and largemouth bass.

**ALL LINN VALLEY WATERS HAVE
COMMON PROPERTY FROM SHORELINE
BACK 10'. STAY OFF PRIVATE DOCKS.
LAKE ACCESS POINTS HAVE BEEN
MARKED WITH ORANGE SIGN.**